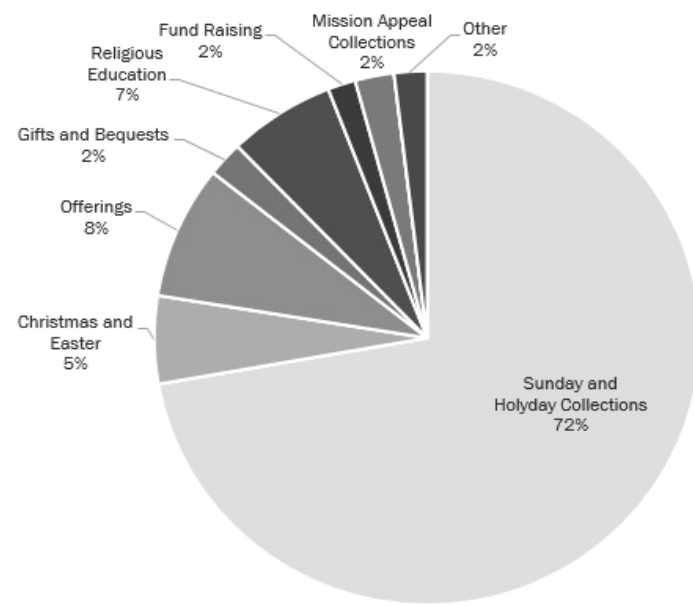
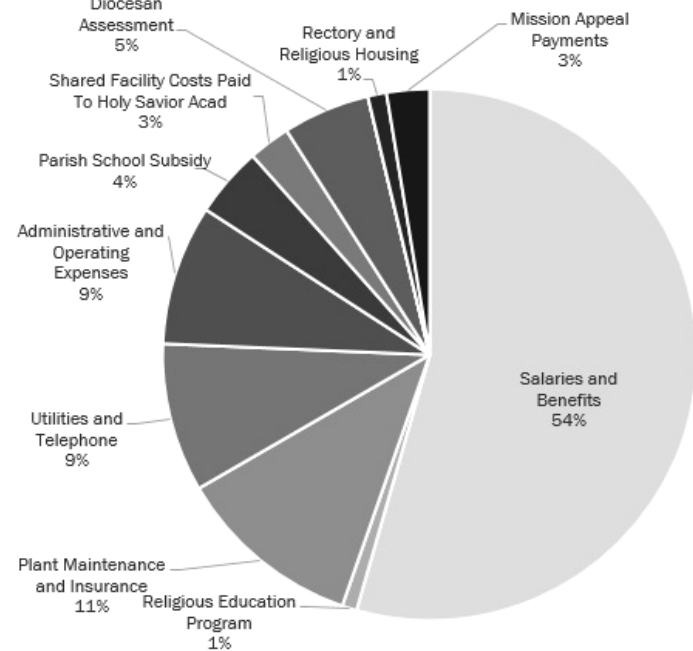


## CHURCH REVENUES

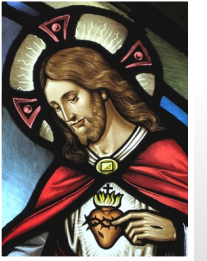


## CHURCH EXPENSES

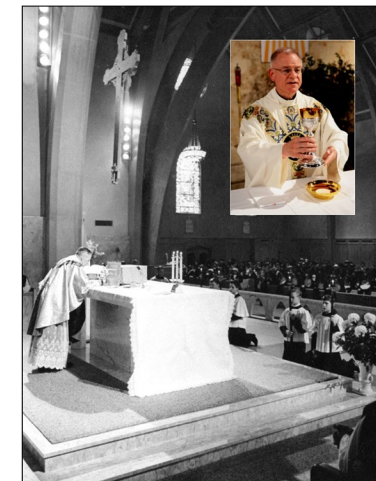


# Church of the Sacred Heart

## PARISH ANNUAL REPORT - 2015



Dear family & friends of the Church of the Sacred Heart, Anniversaries are times of remembrance and celebration. They are opportunities to look back and remember, to dream and plan for the future. They can be



the catalyst for growth and healing. This jubilee year has afforded us such opportunities. We recall the dedication of this magnificent church building 50 years ago with Rev. Alfred T. Sico until



today with myself serving as your pastor for the past 16 years. Under the skilled guidance and time-consuming patience of parishioners Bob Golan, Sr. Kathleen Rooney, SSJ and Sr. Nadine Boyle, RSM the many items that now fill our parish archives have been carefully sorted, cataloged and stored. Much of our history is now easily accessible to our parish family. Our living history continues to be written from the stories of our lives. So much of the story of Sacred Heart Parish is woven together with the story of South Plainfield and the many families that make up this great community. The members of our Jubilee Committee — Dan Mahoney, Lynda Yelenovsky, Ann Marie Ball, Joan Blessing and Nancy Pender Stillman — have planned and celebrated a variety of events through the year culminating with the 5:00PM Vigil Mass on the Feast of Christ the King, November 21, celebrated with our Bishop Paul Bootkoski and a parish dinner to follow in the school cafeteria.

As a parish, we continue to build on a firm foundation set in place 110 years ago. Many have come and gone through the years. Parish leadership has taken a variety

of forms with goals adjusted through changing times, but the vision of who we are and are called to be as *Family* and *Church* is enduring. The day-to-day needs and demands of the present generation are different from fifty years ago. The institutional models that worked in keeping families together and bringing them to Church are a thing of the past. Yet the hunger for spiritual nourishment is stronger than ever. Where does our faith find a relevant place in our lives and in this ever changing world? The importance of *Church* is as significant as *Family*, and both are being challenged from every side.

This is an exciting time that calls forth the best from all of us to apply what we have learned from the past and hold true to the vision for the future. From the dawn of time we were never meant to stand alone, and now more than ever, we are invited to embrace and be embraced as the Living Body of Christ. The enduring vision is to see one another as brothers and sisters and to act in love and respect. This finds us wanting to know more deeply who we are, sharing what we have, serving and supporting one another and living what we profess to believe. This belief, this Faith has been passed on to us by those we know and love. May we humbly receive it and pass on the flame of Faith to those who now look to us.

Thank you to all who live and give of yourselves so generously to this parish from your time, talent and financial treasure. You are the life's blood and spirit of this community. Thank you to the members our Parish Staff, Pastoral and Finance Councils. May it be that fire and love which fills the hearts of all who claim Sacred Heart Parish as their *Family & Church*.

Thanking God for you,

*Fr. John*

Rev. John P. Alvarado

**Building ON A FIRM Foundation**



### SACRED HEART SOCIAL CONCERNS

During the past 12 months (July 2014 - June 2015) parishioners of Sacred Heart

provided food for approximately 30-35 families per month (1500 bags of food) &

financial assistance for 21 families (\$19,260.00). In addition, you assisted families with the distribution of \$4,785.00 in gift cards for food, clothing, and personal needs. You also helped us replenish our food pantry with 1,845 bags of food. Monetary donations from the Poor Boxes (\$22,357.00) & private donations were used to purchase needed extra food and to assist families with financial needs (Utilities & Housing). *Thank you*

**RELIGIOUS EDUCATION 2015 2014 - 486**  
**YOUTH ENROLLMENT 472 2013 - 409**

2015	2014	2013	SACRAMENTAL DATA
52	39	35	<b>Baptism</b>
64	78	86	<b>First Reconciliation</b>
64	61	86	<b>First Eucharist</b>
58	61	69	<b>Confirmation</b>
6	3	4	<b>RCIA</b>
11	21	20	<b>Marriage</b>
47	89	109	<b>Anointing of the Sick</b>
89	87	92	<b>Funerals</b>
54	79	95	<b>New Families</b>

► This data is based on information collected from June 30 through July 1 of each year.



### CHURCH OF THE SACRED HEART

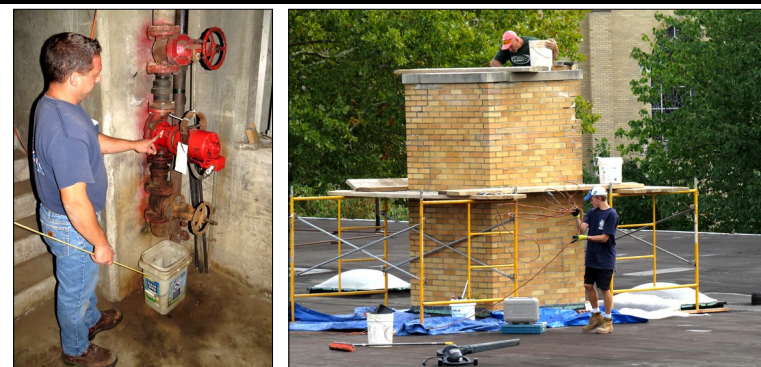
200 Randolph Avenue  
South Plainfield, New Jersey 07080  
908-756-0633 FAX: 908-757-5655  
www.churchofthesacredheart.net

## STATEMENT OF REVENUES AND EXPENSES FOR YEAR ENDING JUNE 30, 2015

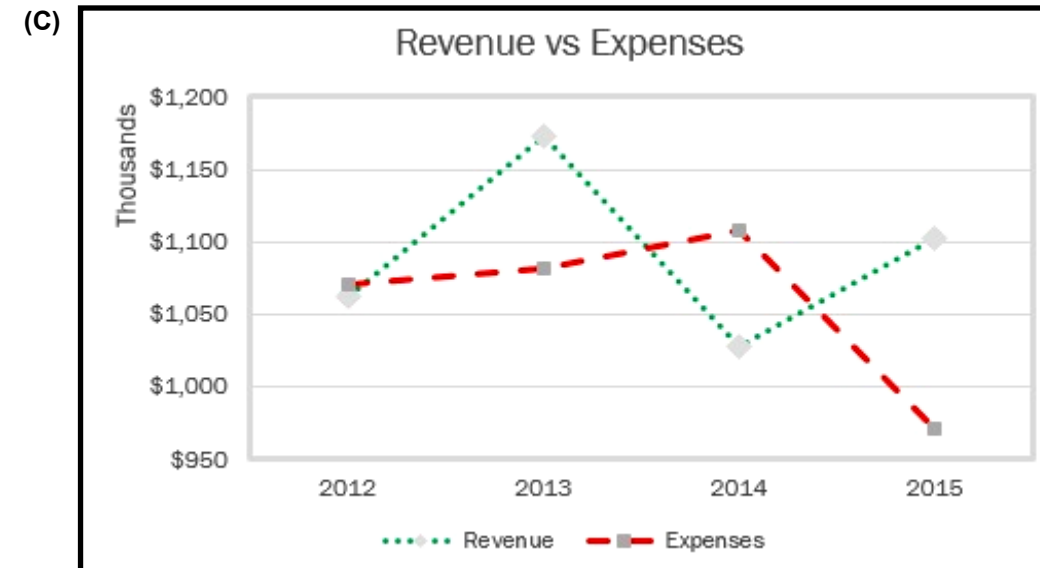
SACRED HEART CHURCH		2015	2014	2013
<b>Operating Revenues</b>				
	Sunday and Holyday Collections	\$ 771,357	\$ 743,896	\$ 764,592
	Christmas and Easter	56,799	54,105	51,978
	Offerings (A)	86,309	90,411	81,331
	Gifts and Bequests	22,696	11,814	118,364 (B)
	Religious Education	67,732	65,005	65,753
	Fund Raising	17,574	16,337	25,747
	Mission Appeal Collections	24,597	27,614	28,713
	Interest & Dividends	109	50	52
	Other	20,704	18,660	36,245
	<b>Total Operating Revenues (C)</b>	<b>1,067,877</b>	<b>1,027,892</b>	<b>1,172,775</b>
<b>Operating Expenses</b>				
	Salaries and Benefits	515,231	566,779	572,703
	Religious Education Program	8,514	18,552	17,027
	Plant Maintenance and Insurance	106,957	110,566	98,534
	Utilities and Telephone	85,650	87,888	87,417
	Administrative and Operating Expenses	80,733	83,347	89,611
	Parish School Subsidy	40,400	40,400	39,300
	Shared Facility Costs Paid To Holy Savior Acad.	24,012	32,783	17,508
	Diocesan Assessment	50,000 (D)	100,900	92,850
	Principal Payment On Diocesan Loan (E)	0	7,500	10,000
	Interest Payment On Diocesan Loan (E)	0	10,688	14,796
	Rectory and Religious Housing	10,663	10,661	12,881
	Mission Appeal Payments	24,597	27,614	28,713
	<b>Total Operating Disbursements (C)</b>	<b>946,757</b>	<b>1,097,678</b>	<b>1,081,340</b>
	<b>Operating Income (Loss)</b>	<b>121,120 (F)</b>	<b>(69,786)</b>	<b>91,435</b>
<b>Extraordinary and Capital Items</b>				
	<b>Revenue</b>			
	Major Renov. & Repairs (monthly 2nd collection)	33,961	0	0
	<b>Total Revenue</b>	<b>33,961</b>	<b>0</b>	<b>0</b>
	<b>Expenses</b>			
	Old Grammar school lighting project with PSE&G	12,986 (G)	9,739 (G)	0
	Gas meter problem	7,292 (G)	0	0
	New school boiler for Holy Savior Acad.-our 50%	4,030 (G)	0	0
	New Air Conditioner for Annex	3,000	0	0
	<b>Total Expense</b>	<b>27,308</b>	<b>9,739</b>	<b>0</b>
	<b>Extraordinary Income (Loss)</b>	<b>6,653</b>	<b>(9,739)</b>	<b>0</b>
	<b>Net Income (Loss)</b>	<b>\$ 127,773 (F)</b>	<b>\$ (79,525)</b>	<b>\$ 91,435</b>

(A) Includes money received for candles, baptisms, funerals, weddings, and collections from Mothers Day, Fathers Day, All Souls Day, and Ash Wednesday.

(B) Includes a bequest in the amount of \$103,981.



Repairs from the church basement to the school's rooftop chimney



(D) Note: Did not pay Diocese of Metuchen for full 2014-15 assessment. Balance due of \$48,000 rolls over to 2015-16 fiscal year assessment. The formula for the calculation of the Diocesan and Holy Savior Academy assessments is on our website.

(E) The Diocese of Metuchen forgave the **\$232,500** loan to Sacred Heart Parish that was necessary when our grammar school tuition-collection company (Tuition Program, Inc.) went bankrupt in 2009, costing the Parish approximately \$300,000 in lost revenue.

(F) The Operating Income (\$121,120) and the Net Income (\$127,773) was partially due to the underpayment of \$48,000 to the Diocese of Metuchen for the full 2014-15 assessment.

(G) 2014 and 2015 amounts include the beginning of monthly payments for the following extraordinary items:  
 (1) - Old grammar school electrical project with PSE&G - \$9,739 in 2014 and \$12,986 in 2015 with \$3,247 balance to be paid off by September 2015.  
 (2) - Problem with gas meter with PSE&G - \$7,292 in 2015 with \$7,291 balance to be paid off by June 2016.  
 (3) - New school boiler for Holy Savior Academy - \$4,030 in 2015 with balance of \$8,060 to be paid off by October 2017. The Academy will pay an equal amount as their share of the new boiler.

### PLANNED GIVING

builds a financial bridge from the present generation to the future. Our parish has a rich legacy and is built on a firm foundation – a strong community of worship and service, a carefully managed financial footing, wonderful memories of parish events and many people strengthened and renewed on our path to salvation. People have been baptized, married, raised families and been buried from this parish. What is the story and heritage that this present generation is passing on to the next generation? Planned giving through wills, bequests and annuities help to provide the financial stability that this parish community may continue to grow and proclaim the Gospel, to minister in the name of Jesus Christ and to be a source of ongoing faith formation. Contact our Parish Office and speak with Jim Bufis 908-756-0633 x114 about the options & tax benefits of giving to your Church.

### PARISH HOUSEHOLDS

2015	2014	2013	2012
<b>Registered - Active</b>			
<b>2,129</b>	<b>2,101</b>	<b>2,104</b>	<b>2,290</b>
<b>Financial Supporters</b>			
<b>1,041</b>	<b>949</b>	<b>903</b>	<b>1,040</b>

### ANTICIPATED FUTURE CAPITAL NEEDS

DESCRIPTION	ESTIMATED \$\$\$
School Roof	\$ 150,000
Church Boiler and Asbestos	100,000
Convent Electrical Panels	20,000
Church Chimney Repair	16,000
Rectory – Heat/Ventilation/Cooling	16,000
School Boiler - Water System	15,000
A/C for Parish Center – <i>Third Floor</i>	12,000
Technology	5,000
School Cafeteria 3rd AC Unit	3,800
<b>TOTAL</b>	<b>\$ 337,800</b>